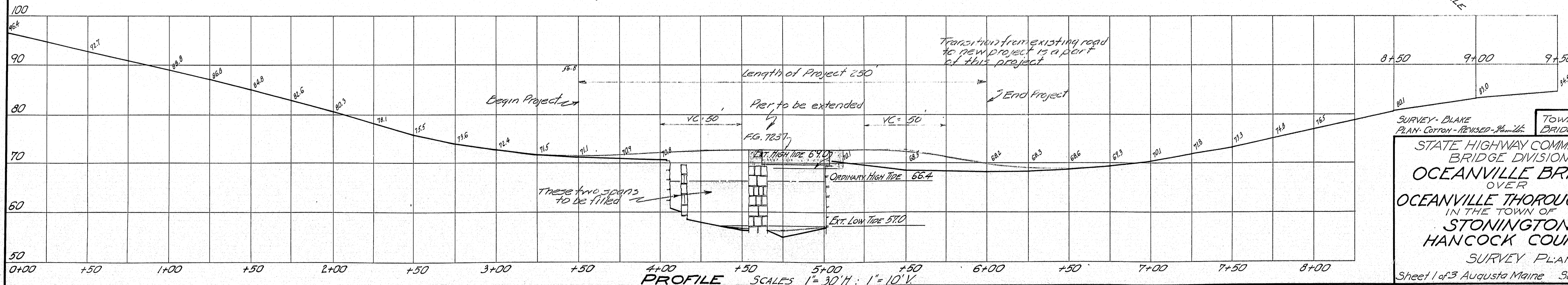


NOTES:
 EXISTING SUPERSTRUCTURE ~ Span No. 1 split granite slabs about 12" thick. Span No. 2 and span No. 3 light steel truss, steel stringers, 2" transverse and 1" longitudinal planking. Steel rusted badly built by Canton.
 EXISTING SUBSTRUCTURE ~ Abut. No. 1 built of stone piers capped with stone slabs. D.S. corner extended with round field stone. Pier No. 1 roughly split granite laid dry. Good condition. Pier No. 2 roughly split granite laid dry. Fair condition. Retaining walls round stone fairly laid capped with split stone.
 STREAM ~ Tide water. Water drains practically out at low tide. No running water. Extreme low tide Elev. 57.4. Extreme high tide Elev. 69.0. Ordinary high tide Elev. 66.4.
 FOUNDATION ~ Abut. No. 1 probably rests on ledge. Pier No. 1 on ledge. Pier No. 2 probably not far from ledge. Abut. No. 2 rests on ledge.
 APPROACHES ~ Surface treated gravel.

PLAN

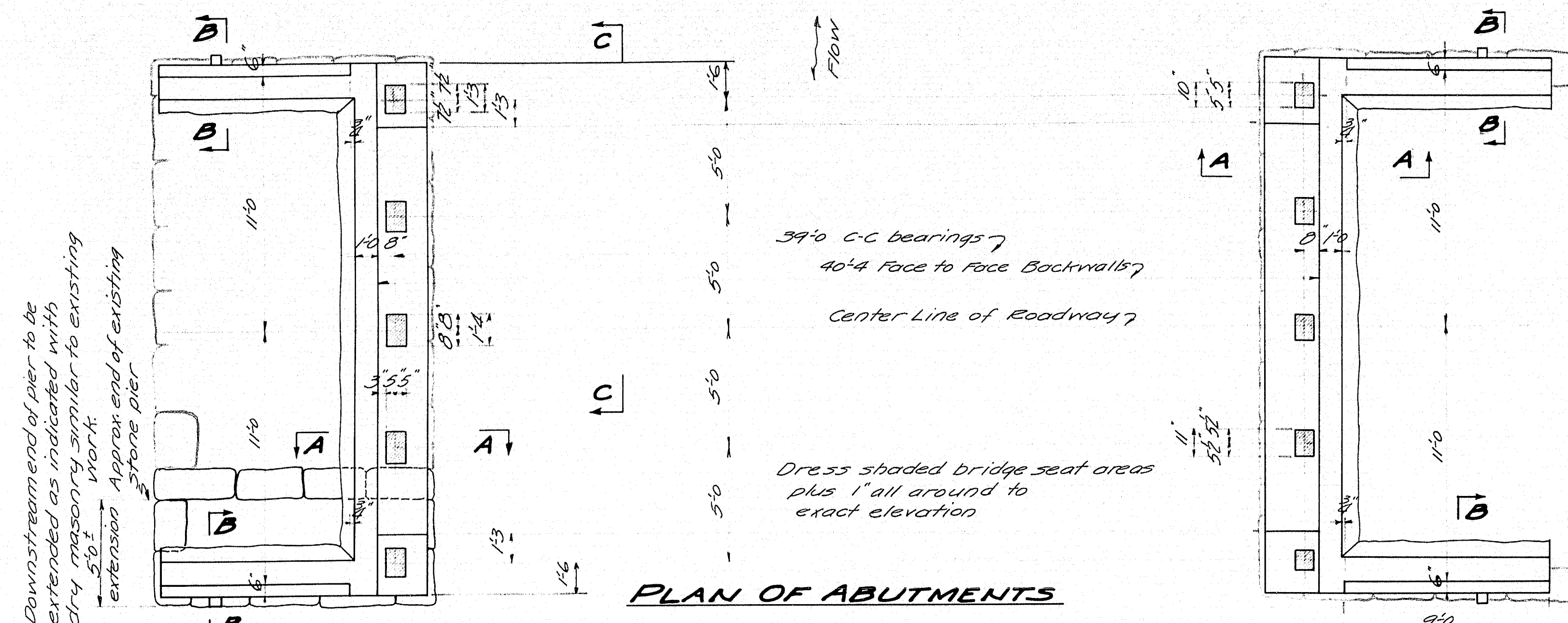
SCALE 1"=30'



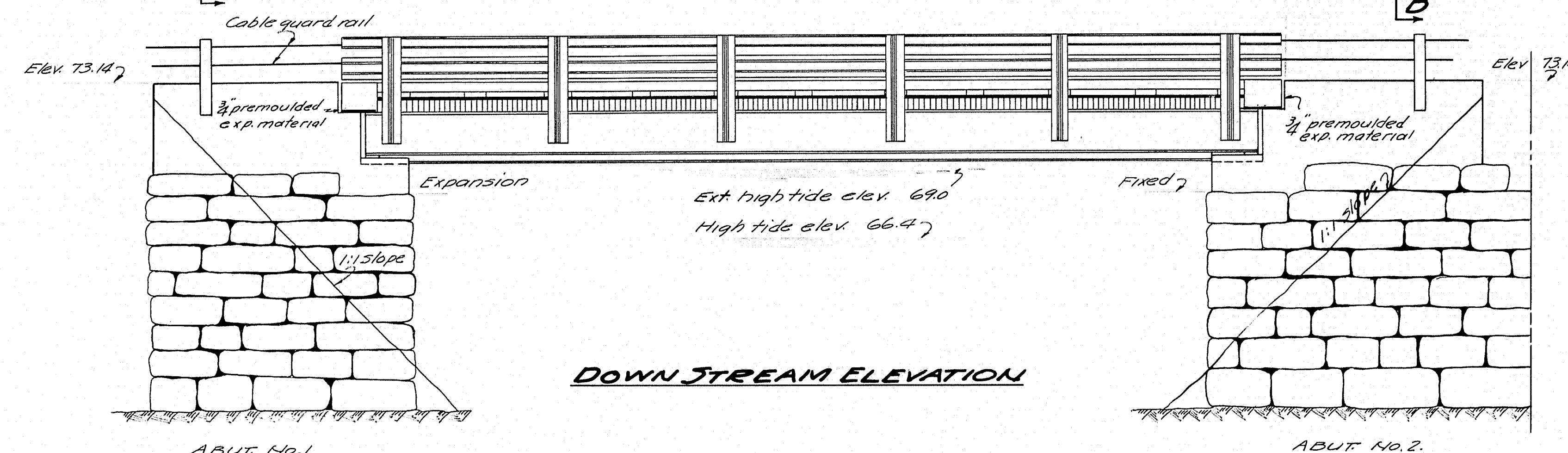
PROFILE SCALES 1"=30' H. 1"=10' V.

SURVEY - BLAKE
 PLAN - COTTON - REVISED - 1939
 TOWN 05-35
 BRIDGE 3596
 STATE HIGHWAY COMMISSION
 BRIDGE DIVISION
 OCEANVILLE BRIDGE
 OVER
 OCEANVILLE THOROUGHFARE
 IN THE TOWN OF
 STONINGTON
 HANCOCK COUNTY
 SURVEY PLAN
 Sheet 1 of 3 Augusta Maine Sept. 1939.

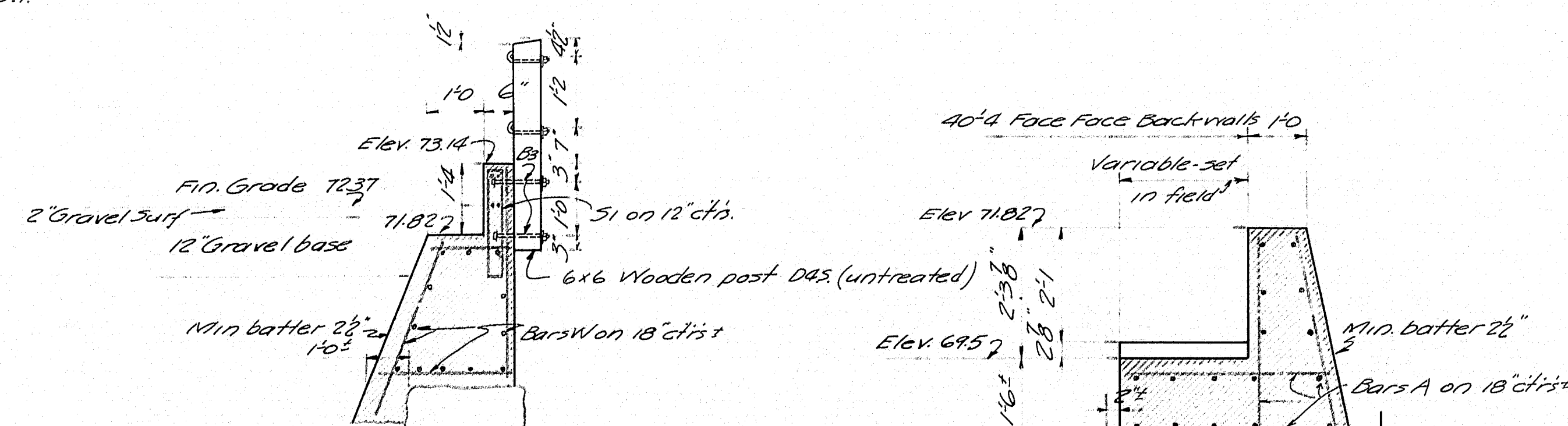
Note: center line of roadway to be set so that new structure will fit existing abutment face of concrete bridge seat to follow existing stone.



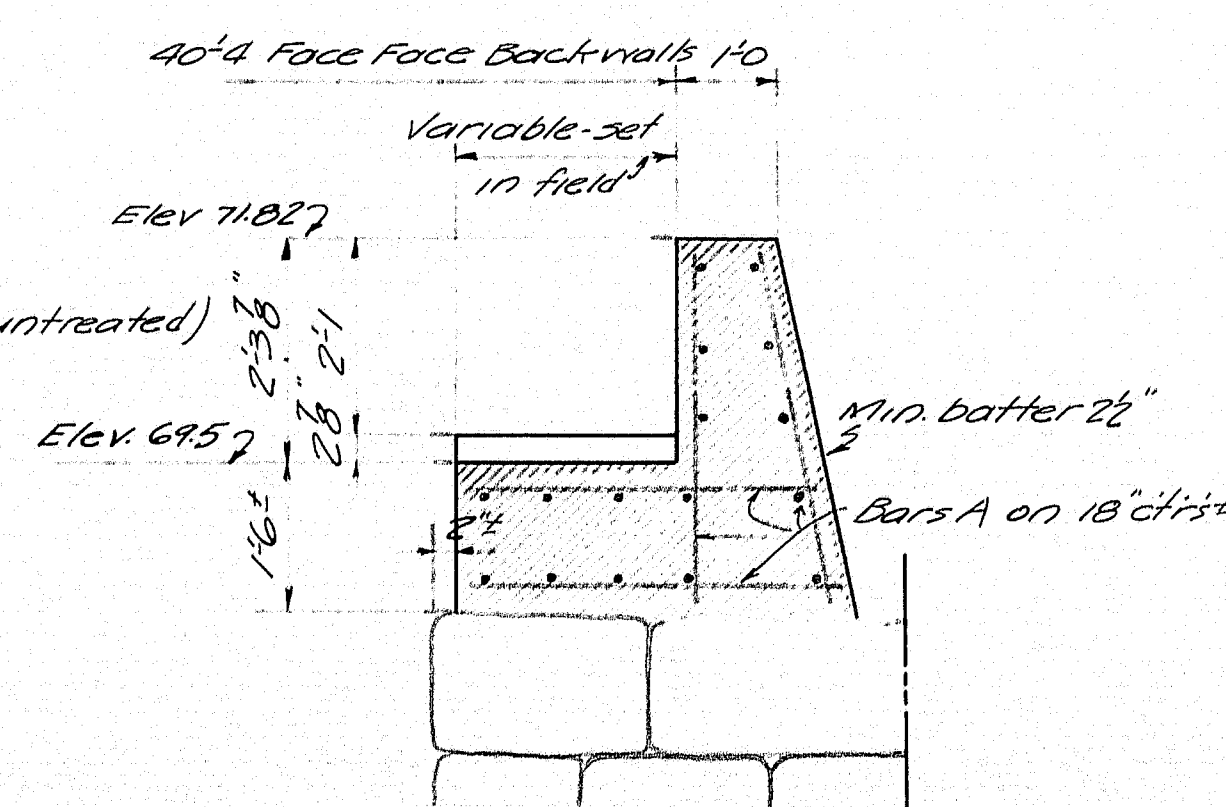
PLAN OF ABUTMENTS



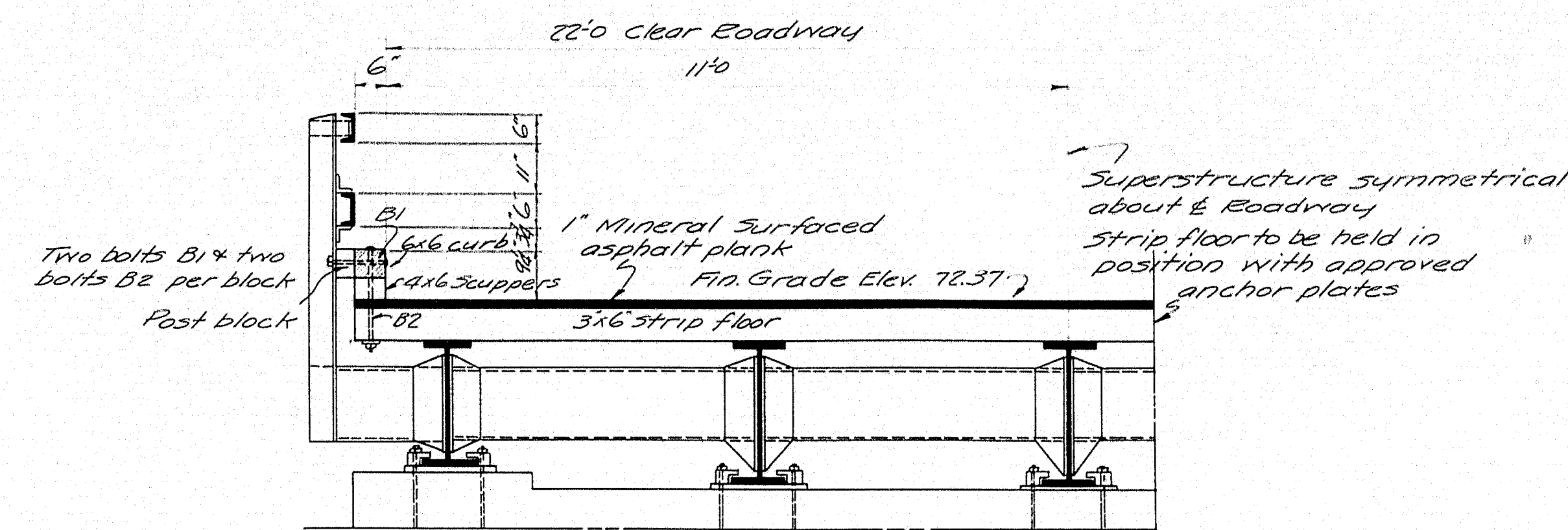
DOWN STREAM ELEVATION



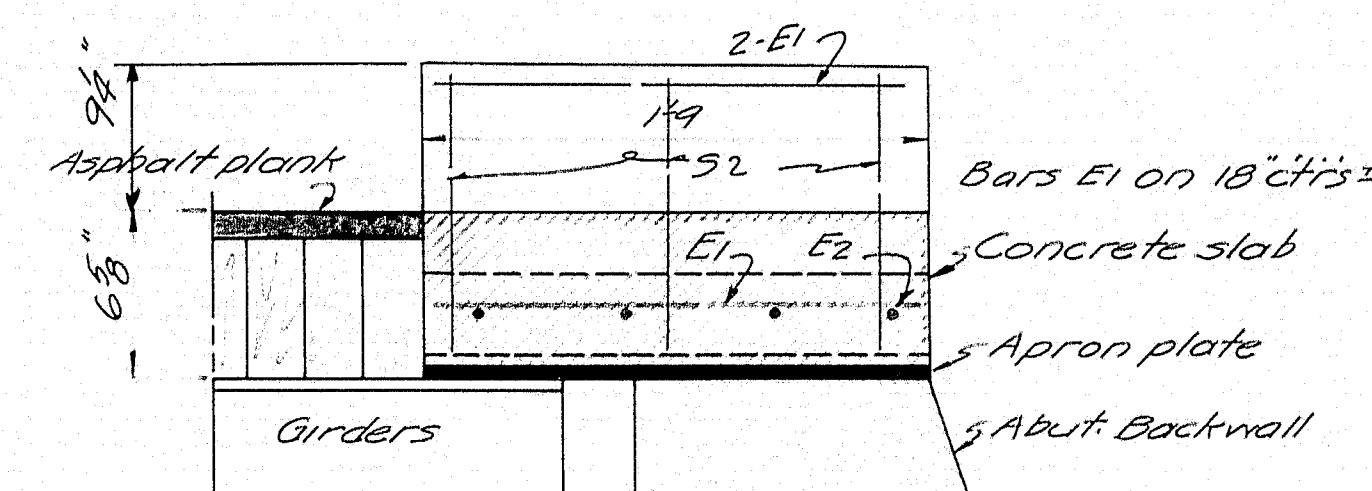
SECTION B-B



SECTION A-A



SECTION C-C



SECTION AT BACK WALLS

TIMBER SCHEDULE	
Strip Floor 3x6 DAs 28'x58' Fin. Size	Required 180 pieces 23'0" long.
Curb 6x6 DAs 58'x38' Fin. Size	Required 4 pieces 14'5" long.
Scuppers 4x6 DAs 38'x58' Fin. Size	Required 22 pieces 14'0" long.
Post Blocks 4x6 DAs 38'x58' Fin. Size	Required 12 pieces 0'7 1/2" long.

All timber to be pressure treated.

BOLT SCHEDULE	
Required 24 bolts B1 5/8" x 0'11"	
Required 44 bolts B2 5/8" x 1'5"	
Equipped with one cast washer each.	
Reqd. 8 bolts B3 3/4" x 1'0" Equipped with one 3x3 plate washer & one cast washer each.	

Bolts to be carriage type with hex nuts.

REINFORCING STEEL	
Bars A 5/8" x 20'0"	Reqd. 60 Abutments.
Bar E1 1/2" x 1'6"	Reqd. 40 Superstructure.
Bars E2 1/2" x 22'9"	Reqd. 8 Superstructure.

Bars 3 1/2" x 4'8"	Reqd. 36 Abuts.	52' 1/2" x 2'8"
Bars W 5/8" x 12'0"	Reqd. 60 Abutments.	12 Regd. Superstructure

Required 900' 1" mineral surfaced asphalt plank.

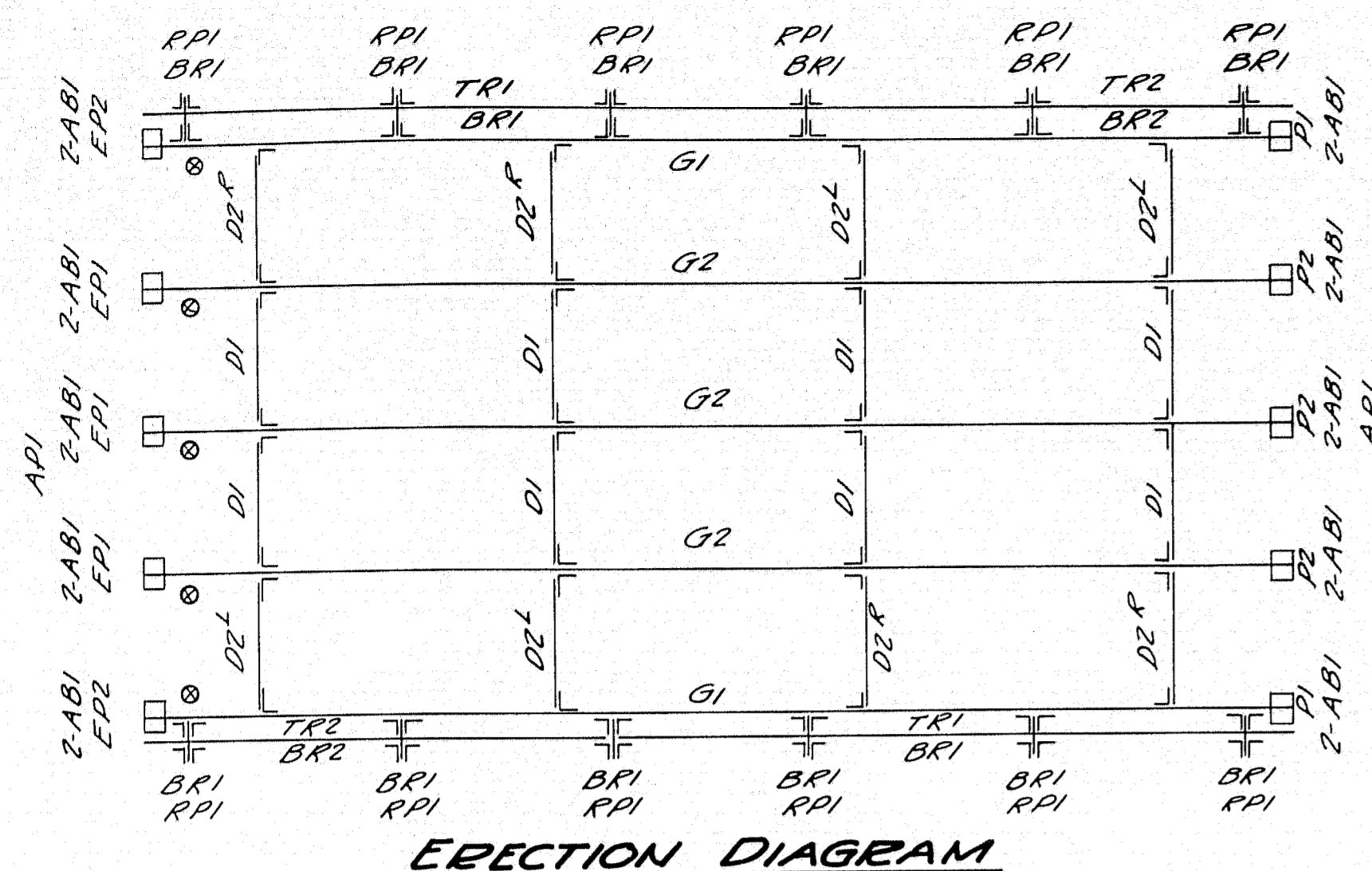
Cut bars "A" & "W" to required lengths in field.

All reinforcing steel to be plain bars structural grade. Dimensions are to & of bars.

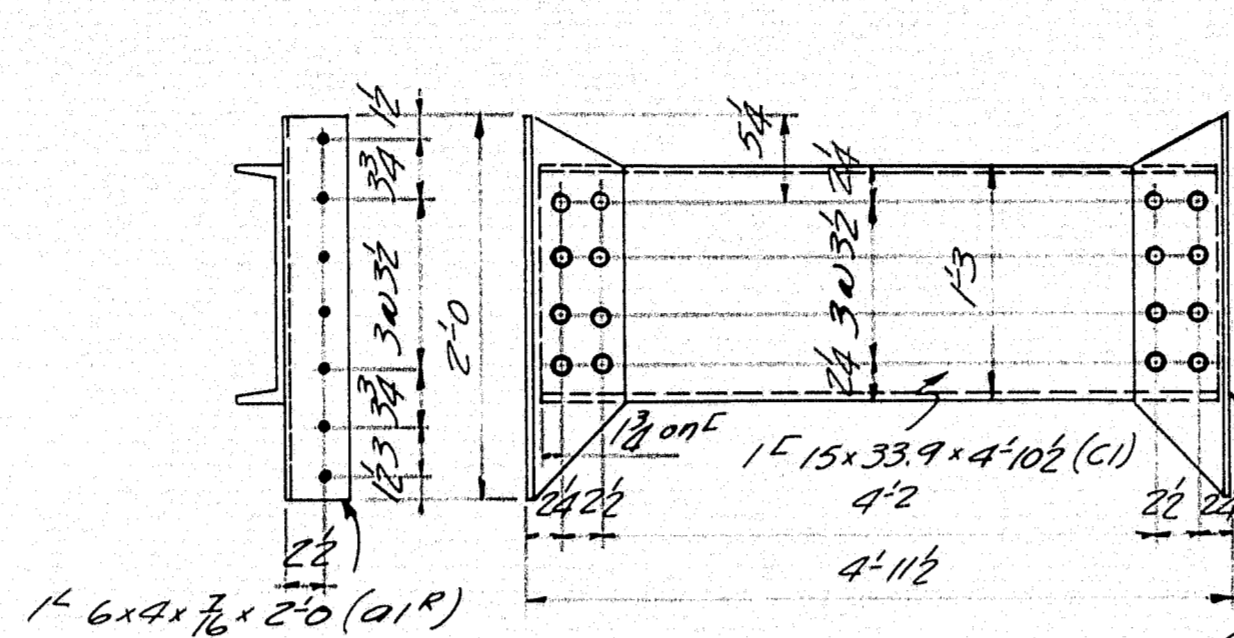
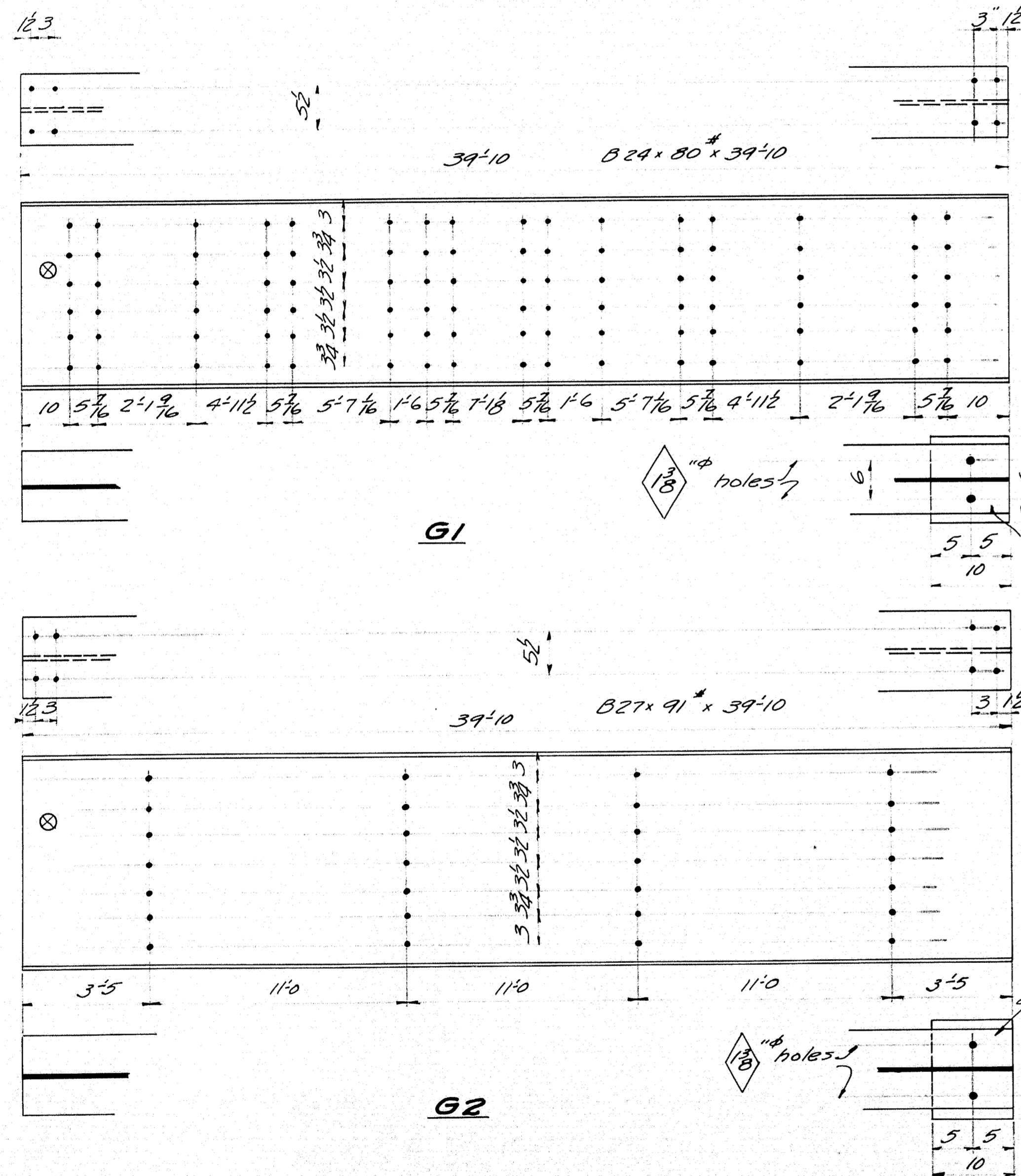
Plan by V.
Checked by E.B.

TOWN 0535
Bridge 3696

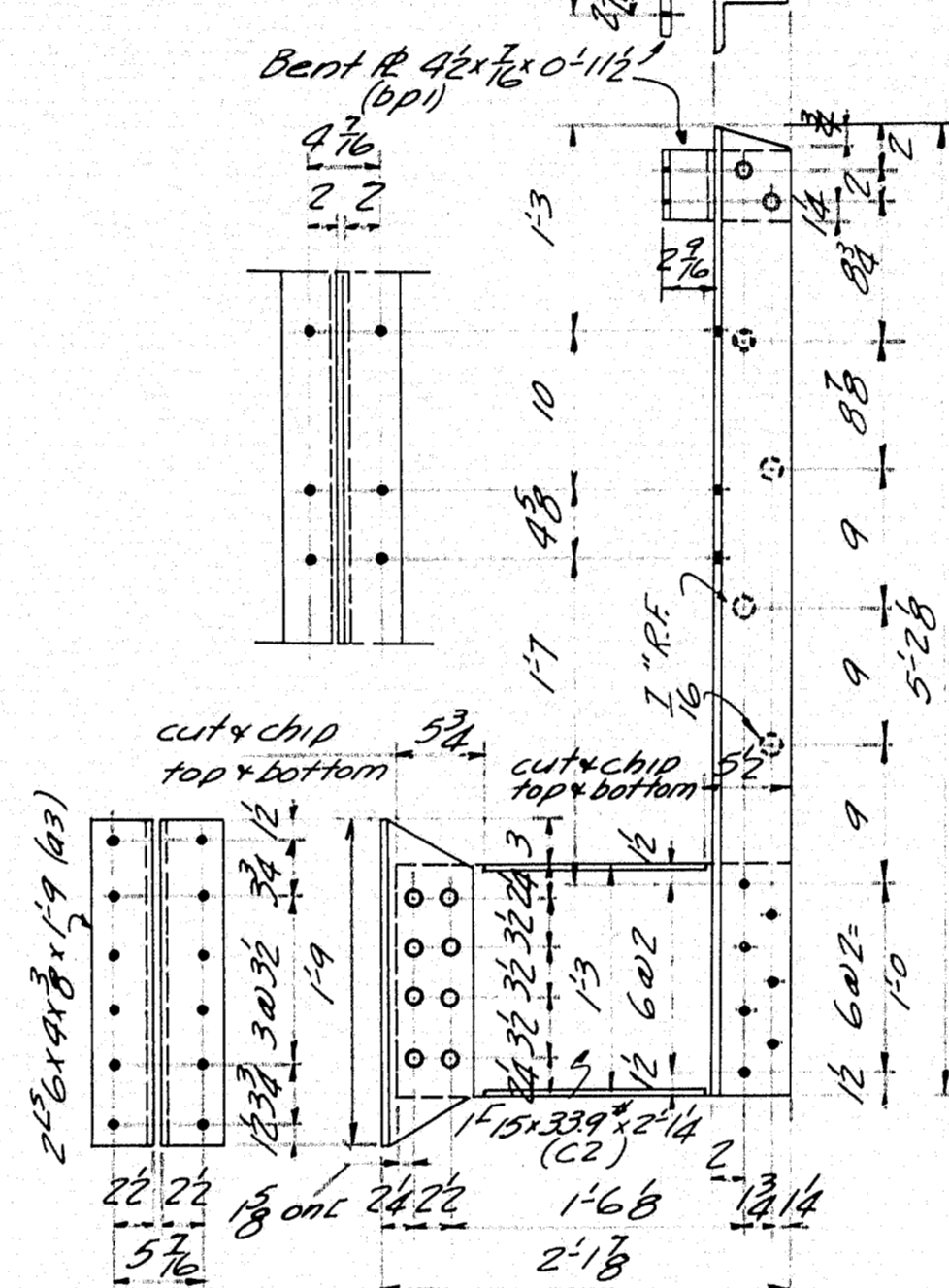
STATE HIGHWAY COMMISSION
BRIDGE DIVISION
OCEANVILLE BRIDGE
over
OCEANVILLE THOROUGHFARE
in the town of
STONINGTON
HANCOCK COUNTY
DETAILS
Sheet 2 of 3 Augusta, ME NOV. 1939.



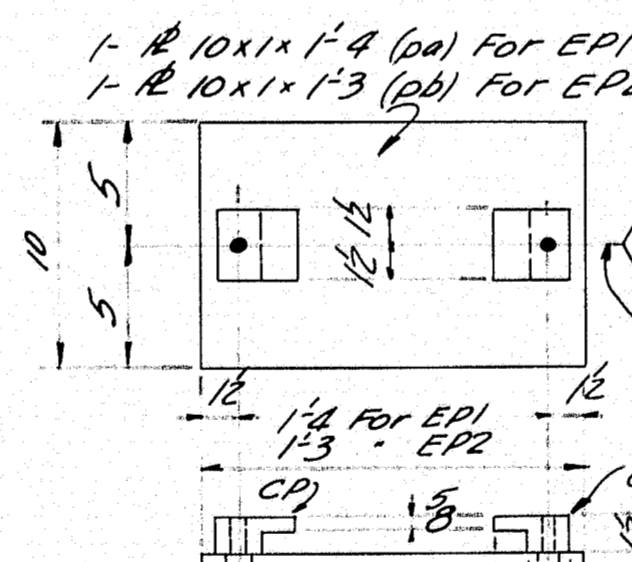
ERECTION DIAGRAM



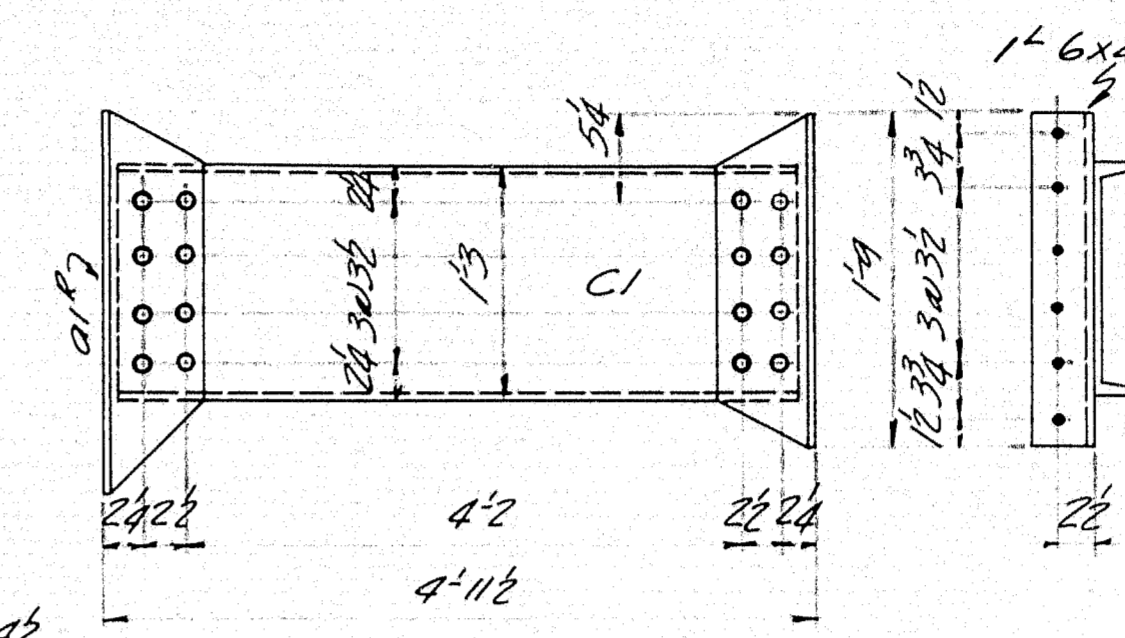
D1



BRI

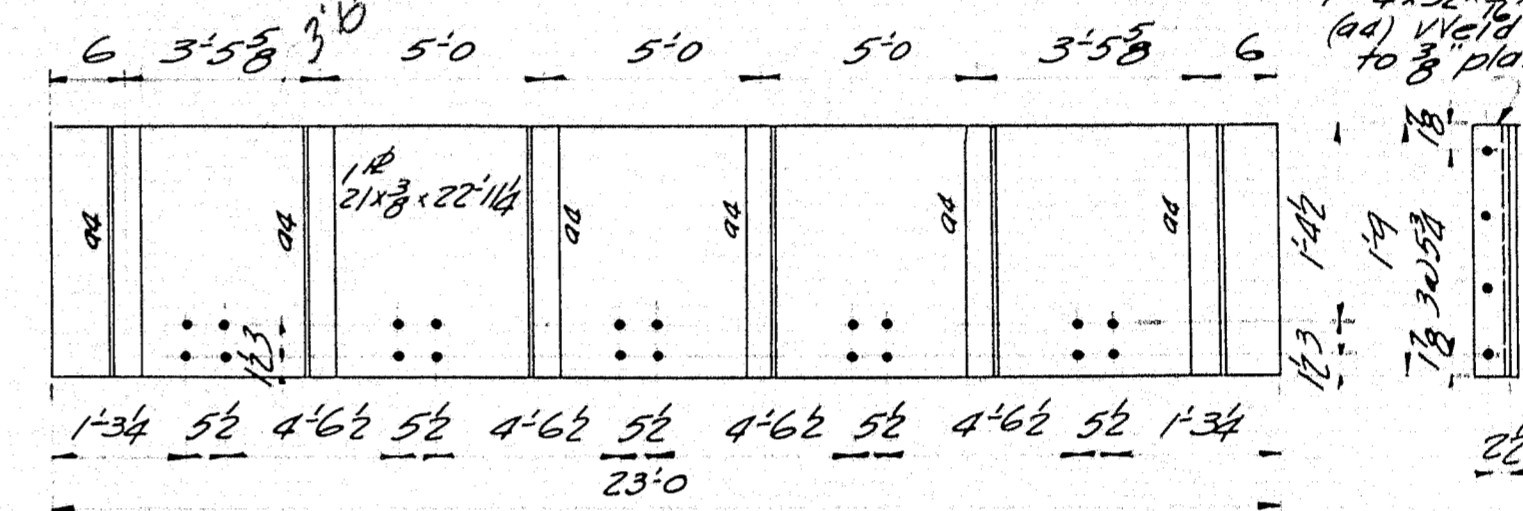


EPI-EP2

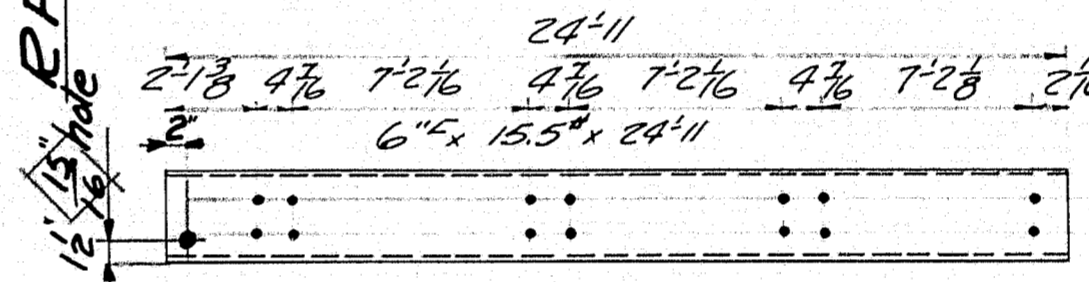


D2R

D2L

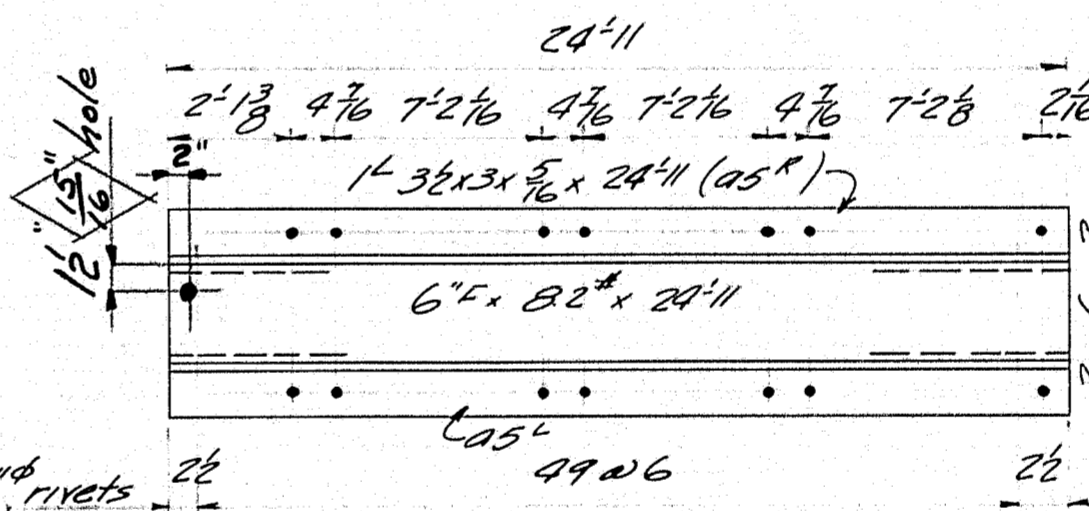


API



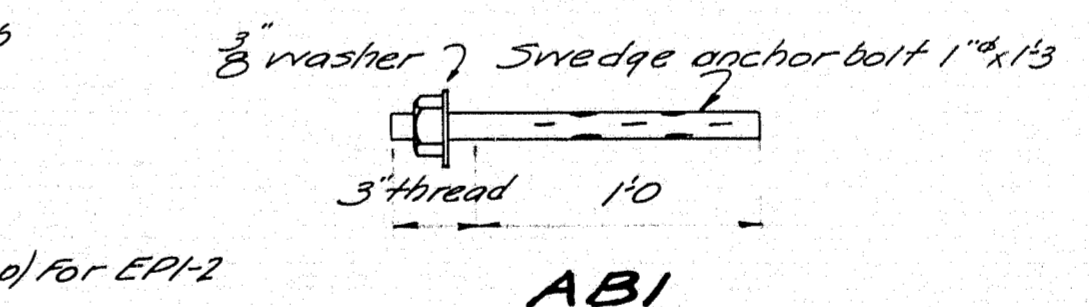
TRI

TR2



BRI

BR2



ABI

MATERIAL LIST		
Mat. Req'd	Remarks	
G1	2	Girders
G2	3	do
D1	8	Diaphragms
D2R	4	do
D2L	4	do
BRI	12	Brackets
RPI	12	Posts
PI	2	Masonry Plates
P2	3	do
EPI	3	Expansion Plates
EP2	2	do
API	2	Apron Plates
TRI	2	Rail Bars
TR2	2	do
BRI	2	do
BR2	2	do
ABI	20	Anchor Bolts

Bolt Schedule		
No	Size	Length
48	3/4"	1 1/2"
240	3/4"	2"
124	3/4"	2 1/2"
84	3/4"	2 1/2"

SPECIFICATIONS - Maine State Highway Commission Specifications for Steel Highway Bridges, August 1937. LOADING H15. All field connections to be bolted. Rivets 3/4" unless noted. Open holes 1/2" unless noted. Bolts to be Am. Std. with hex heads and nuts.

Plan by E. B. Checked by E. B. TOWN 0535 Bridge 3696

STATE HIGHWAY COMMISSION
BRIDGE DIVISION
OCEANVILLE BRIDGE
over
OCEANVILLE THOROUGHFARE
in the town of
STONINGTON
HANCOCK COUNTY
STEEL DETAILS
Sheet 3 of 3 Augusta Me., Nov. 1939